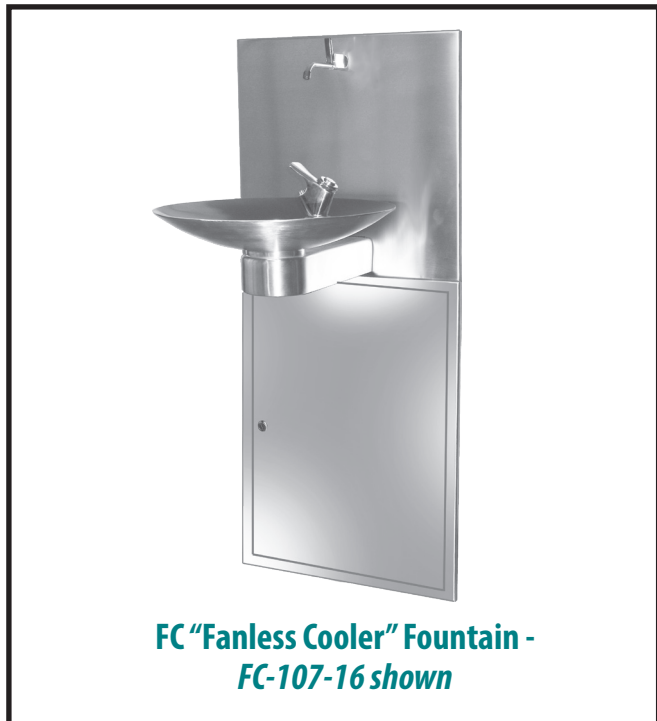




FILTRINE'S FC "FANLESS COOLER" DESIGN FEATURES & ADVANTAGES



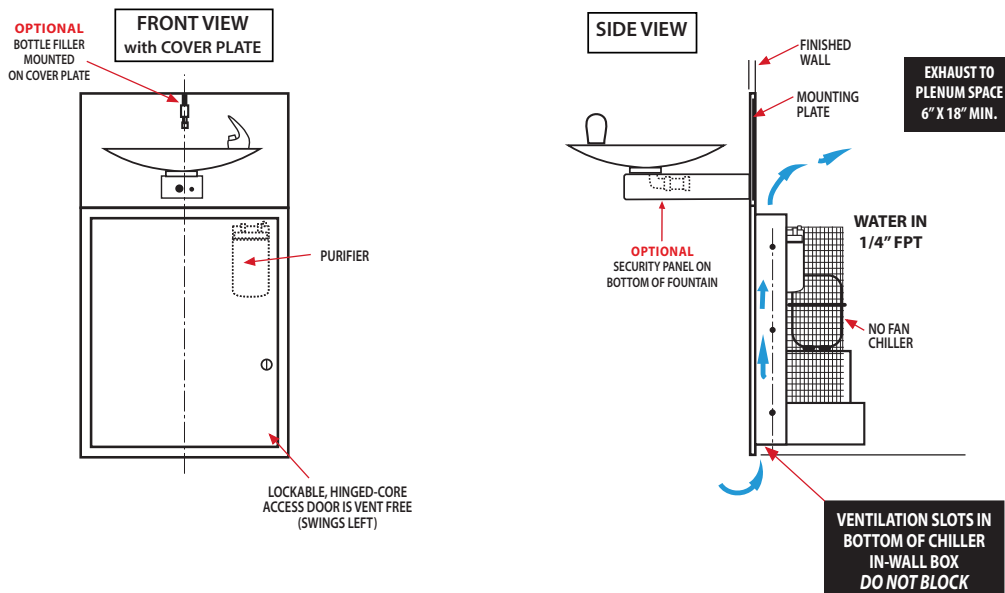
**FC "Fanless Cooler" Fountain -
FC-107-16 shown**

FILTRINE'S UNIQUE "FANLESS COOLER" DESIGN OFFERS THE FOLLOWING BENEFITS & FEATURES

- 1** Efficient static condensor uses convection to allow air flow over coils.
- 2** No vents or grille necessary, providing a more aesthetically pleasing appearance.
- 3** Fanless design allows for quieter operation in indoor settings.
- 4** Only requires 6" x 18" plenum space for proper air flow.
- 5** Swinging access panel with key lock.
- 6** FC Chillers are available for all Filtrine drinking fountains and filling station models.

*See below diagram for typical FC Fountain layout and features.

TYPICAL FC FOUNTAIN LAYOUT - FEATURING THE 107-16 FOUNTAIN W/ BOTTLE FILLER



FILTRINE Mfg Co • 15 Kit St. Keene, NH 03431 USA
800-930-3367 • 603-352-5500 • FAX 603-352-0330
www.filtrine.com • drinkingwater@filtrine.com



FILTRINE IS ISO 9001-2008 REGISTERED
PRODUCT LINE APPROVED MARK AVAILABLE



**FC COOLER
FEATURES [EB]
REV. 04.28.2015**